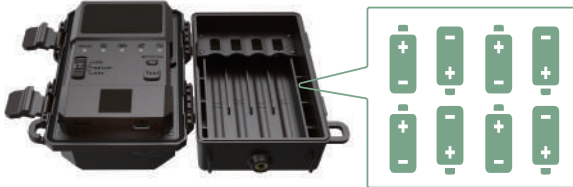


Quick Start Manual

6 Steps to get the camera ready

Step1: Insert the Batteries

Open the latch next to the camera, put in 8 AA batteries, please pay attention to the correct direction of the positive (+) negative (-), close the latch after inserting them in. Avoid mixing batteries of different specifications to ensure optimal performance.



Step2: Insert the SD card

Insert the SD card and the captured image data will be saved in the SD card.

Step3: Insert the SIM card

Insert the SIM card. The SIM card is a necessary accessory for remote transmission of image data to the App. Please note that traffic charges will be incurred during the transmission process.



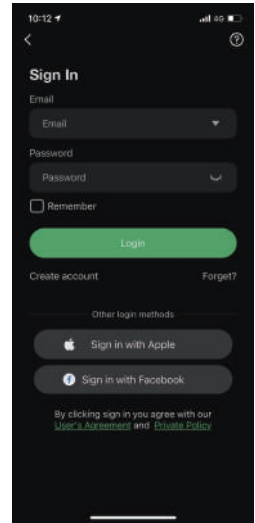
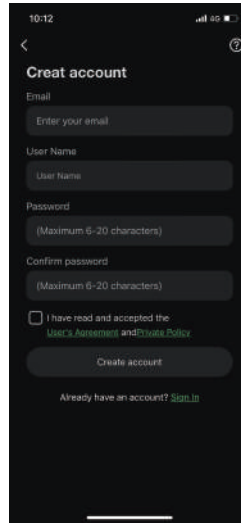
Step4: Install the Antenna

Install an antenna. The antenna is an accessory that enhances network signals. Without an antenna, the camera may not be able to send image data to the App.



Step5: Using the App to Pair and Activate the Camera

Download the App, register an account by email or just log in with 3rd-party App(The verification code will send to the email, please check the spam if you do not receive it). And scan the camera's QR code through the App to pair it. After pairing, the camera will be activated and added to your account, and now you can test to use it.



Step6: Test the Functionality of the Camera

Switch the mode to SETUP, then click the Test button to take an image, and check whether the image transmits to the App, if it goes well you can switch the mode to ON to capture images.



Use and enjoy it

Switch to ON mode and close the latch, place the camera where you need to capture.

